

Quick Start

p-collar 511
No Bark collar



! WARNING

Container may explode if heated.

Do not expose to heat or store at temperatures above 45°C or 120°F.

Do not puncture or incinerate container.

Use with adequate ventilation.

Keep out of reach of children.

B-511-TEX-001

Please read the quick start before beginning.

Thanks for purchasing!

P-collar 511 No Bark collar is designed to let dogs live safely, happily and get along with people more harmoniously.

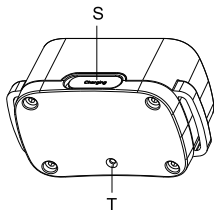
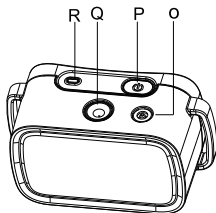
⚠ WARNING Do not use with aggressive dogs.

Aggressive dogs can cause severe injury and even death to their owner and others. If you are unsure whether this product is appropriate for your dog, please consult your veterinarian or certified trainer.

⚠ CAUTION Safety during on-leash training.

It is vitally important that you and your dog remain safe while learning during on-leash training. Your dog should be on a strong leash, long enough for him to attempt to chase an object, but short enough for him not to reach a road or other unsafe area. You must also be physically strong enough to restrain your dog when he tries to chase.

Overview



- O. Inflation valve
- P. On/Off Button
- Q. Spray valve
- R. LED Indicator
- S. Charging Port
- T. Microphone

Setting Up the Product

Before you can use the Dog Collar, you must set up the product as below steps:

1. Charging the Collar.
2. Replenish the collar with gas.
3. Prepare the Collar .
4. Function test, test function before wearing it on dog.

Charging the Collar

1. For the initial charge, be sure to charge it for 4 hours.
Subsequent charges only take 2-3 hours.
2. When full charged, the red LED on the Collar will become green.
3. Please replace the rubber cover when the Collar is full charged.

Tips:

1. Excessive charging will shorten battery life. Only charge them when batteries are low.
2. When you're not using the collar, please turn it off to increase the battery life.

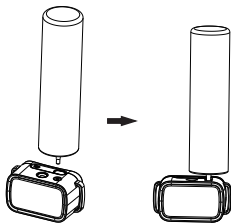
Note:

Please use the Output:DC 5V 500-800mA USB charger to charge the product.

Don't use a charger that does not meet the USB specifications to charge the product.


Replenish the collar with Citronella Refill

Please confirm that the collar is turned off and put the receiver underneath, With the Citronella Refill tank facing down, align it with the collar's inflation valve and press firmly for about 15 seconds to fill the receiver.



Prepare the Collar

Turn on the Collar

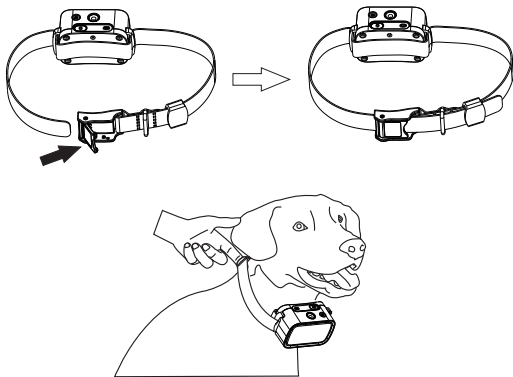
- Press the  Button the Green LED light comes on.
- In normal mode, the Green LED will flash every 4 seconds, indicating the Collar is on .

Turn off the Collar

Press and hold the  Button until the Red LED light shuts off (This takes approximately 3 seconds).

Assembly the Collar

Referring to the image below, wear the collar on the dog's neck and keep the spray valve aligned with the dog's face.



NOTE:

To extend the life of the batteries,
please turn off the Collar off when it is not in use.

Function Test

We recommend you have a function test before use.

1. Insert the charging cable to keep the collar charged and the red LED will light.
2. Press and hold the ON / OFF button until the red and green LEDs Alternately bounce.

3. Shake the collar and the collar will spray.

(Warning:

Do not face the Spray valve on your face and eyes.)

4. Shouts to the collar's microphone: "WO, WO",

the collar will produce vibration and tone.

5. The device will exit the function test mode without operating for 1 minute or pressing the on/off button for 3 seconds.

Note:

The above operation is performed in the test mode. Please exit the test mode after the test is completed to use it normally.

Note:

The p-collar 511 No Bark collar is a smart product.

It can automatically select the three modes of sound/vibration/spray according to the pet's barking frequency and intensity for proper matching.

There are 7 levels of vibration intensity, and the spray can become stronger or weaker. These are all intelligent choices.

Usually, when the pet bark first , the collar will not spray immediately, but an audible warning will occur first, followed by a vibration warning, and a combination of sound and spray warning will occur intermittently.

It will warn 10 times in a maximum of 80 seconds and then automatically stop for 1 minute to prevent damage to the pet.

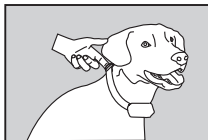
Collar Fitting

Please fit the collar properly so that the product press firmly against the dog's skin. When properly fitted, you should be able to put a finger in between the product and dog's neck.

Too loose: The Receiver Collar will move around the dog's neck, Will affect spray position and effect.

Too tight:

It may cause dog's to breathe hard.



Device Information

Product Specification

Battery Type	Rechargeable, lithium polymer battery
Battery Life(typical use)	8 days
Receiver Waterproof Rating	IEC 60529 IPX5, waterproof
Operating temperature range	From -10-45°C(from 14-120°F)

The unit need to be charged under any of below situations

1. The indicator light on the Collar is emitting a red color every 4 seconds or flashes rapidly.
2. The indicator light on the Collar will not come on.
3. The indicator light on the Collar comes on momentarily when any of the Mode Buttons is pressed.

Others

Frequently Asked Questions

Is the Vibration/Spray safe for my pet?	While the Vibration/Spray is unpleasant, it is harmless to your pet.
How old does my pet have to be before using the Collar?	Pets should be at least 6 months old .
Once my pet is no longer barking, does it still need to wear this collar?	Probably not. You may need to wear it from time to time to consolidate the effect.
Is the Collar waterproof?	Can be protected from rain, but not soaked in water.

Troubleshooting Guide

The Collar will not turn on.	Make sure the Collar has been charged. For the initial charge, be sure to charge it for 4 hours. Subsequent charges only take 2-3 hours.
Product can't spray.	<ul style="list-style-type: none">• Check if the product is turned on.• Check if the spray valve is blocked.• Add the Citronella Refill to the product.
Can't add the Citronella Refill into the product.	<ul style="list-style-type: none">• Check if the inflation valve is blocked.• Check if there is any the Citronella Refill in the Citronella Refill tank.

Warranty and repair information

1-Year Limited Lifetime Warranty

The original purchaser for this unit is provided with
1-YEAR WARRANTY.

The warranty begins from the date of purchase.

For the first year,

coverage is for both Parts and Labor on warranty repair services.

Accessories such as straps and batteries are covered for the first year only. After the first year, the Limited Lifetime Warranty covers Parts only and does not cover Labor Fees and Accessories. All shipping fees incurred, the cost of Accessories after the first year, and Labor fees associated with out of warranty repair work, are the customer's responsibility. Labor fees will be variable depending on the extent of the work required.

The Limited Lifetime Warranty expires 5 years after a model is discontinued from production.

To Qualify for the Warranty

All products must provided a proof of purchase is required to initiate repair work under warranty. We strongly recommend keeping the original receipt. If a proof of purchase is not available at the time of service, we will estimate the age of unit by the serial number. Serial number estimates can differ from the actual purchase date. A serial number estimate is the only method of determining an approximate date of purchase without a proof of purchase.

Not Covered Under Warranty

We DO NOT offer warranty for products that have been bought secondhand or as a resold product. We DO NOT replace defective units or provide refunds for products purchased from us after 30 days from the date of purchase. Issues of replacement and refunds on units purchased less than 30 days from an authorized dealer must be addressed to the dealer directly. If the products purchased from an authorized

dealer are after 30 days from the date of purchase, please send the units to us for service and repair.

We DO NOT cover the cost of repairs and replacements due to misuse by the owner or dog, improper maintenance, and/or lost units. Any water damage on the Water Resistant remote and the Water Resistant Receiver of our product series will not be covered. All replacement costs for either the remote or receiver will be the owner's responsibility. The warranty is void if the unit has been altered or an unauthorized person has damaged the unit while attempting repair work. We reserve the right to retain and discard any parts or accessories that have been found damaged upon replacement and repair.

Procedure for Repair Work

If the unit is malfunctioning, please refer to the "Troubleshooting Guide" in the quick start before sending it back for Service. The cost of shipping products under warranty back is the customer's responsibility. We are not responsible for units damaged or lost in transition. We are not responsible for loss of training time or inconvenience while the unit is in for repair work. We do not provide loaner units or any form of compensation during the repair period. A copy of the sales receipt showing the purchase date may be required before warranty work is initiated. Please include a brief explanation outlining the problem and include your name, address, city/state/zip code, daytime phone number, evening phone number, and email address.

Compliance

FCC - USA

This device complies with part 15 of the FCC Rules.

Operation is subject to the following two conditions:

(1) This device may not cause harmful interference.

(2) this device must accept any interference received, including interference that may cause undesired operation.

CAUTION: Modification or changes to this equipment not expressly approved by manufacturer may void the user's authority to operate the equipment.

Note: This equipment has been tested and found to comply with the limits for a Class B digital device, pursuant to part 15 of the FCC Rules.

These limits are designed to provide reasonable protection against harmful interference in a residential installation.


This equipment generates uses and can radiate radio frequency energy and, if not installed and used in accordance with the instructions, may cause harmful interference to radio communications. However, there is no guarantee that interference will not occur in a particular installation. If this equipment does cause harmful interference to radio or television reception, which can be determined by turning the equipment off and on, the user is encouraged to try to correct the interference by one or more of the following measures:


- Reorient or relocate the receiving antenna.
- Increase the separation between the equipment and receiver.
- Connect the equipment into an outlet on a circuit different from that to which the receiver is connected.
- Consult the dealer or an experienced radio/TV technician for help.



Shenzhen Patpet Technology Co.,Ltd

 <https://patpet.com/>

 Become a dealer: inquiry@patpet.com

 After-service: support@patpet.com

 @PatpetDogCollar

 Youtube Video Guide



MADE IN CHINA