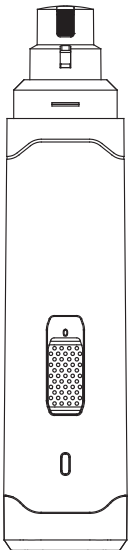
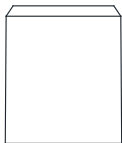




# Quick Start



Pet Nail Grinder: N10



## User Manual

before using please read the manual carefully and keep it properly for reference

## WARRANTY CARD

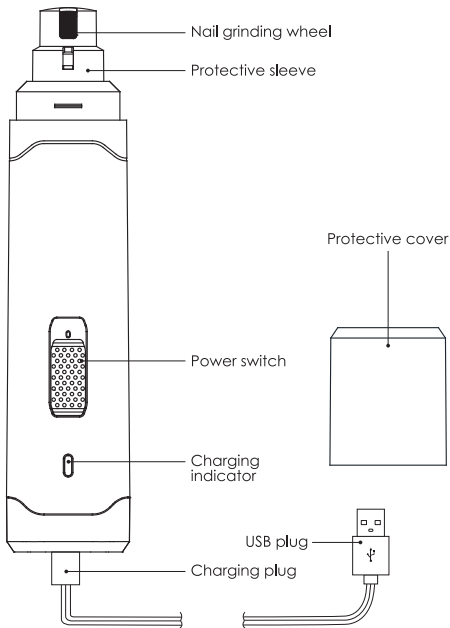
PURCHASE DATE	TERM OF SERVICE

GUEST	ADD.		NAME	
			TEL.	
POS	ADD.		NAME	
	NAME		TEL.	

### PRODUCT PROVIDE THE FOLLOWING WARRANTY

1. Production under the strict quality management and check.
2. Problems during the normal using, one-year warranty is offered by presenting the WARRANTY CARD.  
(grinding wheel is consumable, paid to provide)
3. Some paid service are following:
  - a) problems caused by improper use;
  - b) problems caused by improper fix or modification;
  - c) problems caused by natural disaster;
  - d) problems or damages caused by hitting or dropping after purchase;
  - e) problems caused by power fault;
  - f) problems caused by not obeying the rules;
4. Please present the WARRANTY CARD for maintenance.

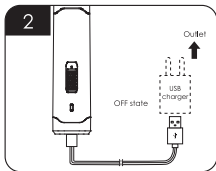
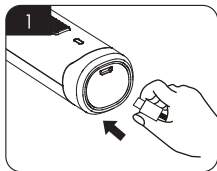
## Product Diagram



## Product Specification

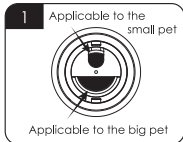
Product name	Pet Nail Grinder
Charger	Input: AC100-240V 50/60Hz Output: DC5V 1000mA
Battery type	Ni-MH battery 1.2V 600mAh × 3pcs
Charging time	3h
Using time	2h
2 Speed using	7000-8000/RPM

## Charging Method



1. Insert the charging plug into the slot of the nail grinding machine.
2. Insert the USB plug into the USB charger (mobile phone charger).
3. Confirm to insert the charger into the outlet when the nail grinding machine is in the OFF state.
4. The blue indicator light flashes in the charging state. After charging, it continuously lights up, rather than flash.

## Method of Application

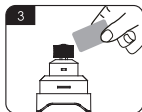
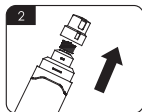
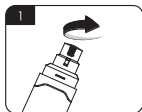


1. Please select an appropriate port according to the pet's nail characteristics.
2. When grinding the nail, please gently put the pet's nail into the nail grinding hole. The grinding time shall not be longer than 5 seconds each time.
3. If a nail grinding machine is used for the pet for the first time, it is suggested to grind the sharp or long nail of the pet first. Please note not to grind too much and make the pet adapt to the nail grinding machine.



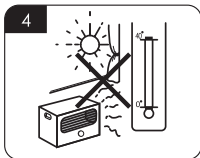
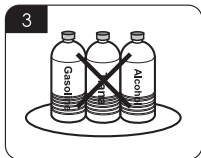
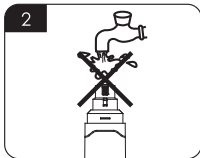
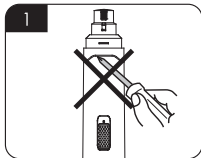
\* Please clean the impurities on the nail grinding wheel surface when the nail grinding effects are reduced.

## Cleaning



1. Rotate the protective cover of the nail grinding wheel anticlockwise and take it down.
2. Start the nail grinding machine to make the nail grinding wheel rotate.
3. Gently touch the rotating nail grinding wheel with an eraser or a piece of cloth to remove the nail powder left on the grinding wheel surface.

## Cautions



1. Do not tear down the product at random.
2. Do not clean product by water flush, and keep the unit away from damp situation.
3. Do not use any corrosives such as alcohol, gasoline etc. to clean the surface.
4. Avoid being charged above 40°C or below 0°C.

\* If the product is not used for a long time, please charge it once at least every three months.

\* Product becoming hot during use or charging is normal.

### Disposal of Battery


The inside is rechargeable battery. Please take the battery out before discarding it and dispose the battery in an environment-friendly way.


# Quality Moving the World



Shenzhen Patpet Technology Co.,Ltd

 <https://patpet.com/>

 Become a dealer: [inquiry@patpet.com](mailto:inquiry@patpet.com)

 After-service: [support@patpet.com](mailto:support@patpet.com)

 [@PatpetDogCollar](#)

 Youtube Video Guide

Made in China

