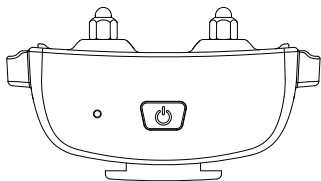




Quick Start



p-collar 301



Please read the quick start before beginning.

Important Safety Information

Patpet dog training collar is designed to let dogs live safely, happily and get along with people more harmoniously.

⚠️ WARNING Do not use with aggressive dogs.

Aggressive dogs can cause severe injury and even death to their owner and others. If you are unsure whether this product is appropriate for your dog, please consult your veterinarian or certified trainer.

⚠️ CAUTION Safety during on-leash training.

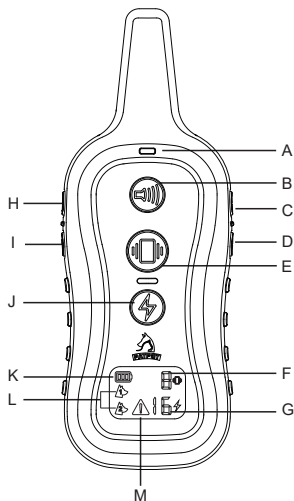
It is vitally important that you and your dog remain safe while learning during on-leash training. Your dog should be on a strong leash, long enough for him to attempt to chase an object, but short enough for him not to reach a road or other unsafe area. You must also be physically strong enough to restrain your dog when he tries to chase.

CAUTION Risk of skin damage.

Please read and follow the instructions in this manual. Proper fit of the collar is important. A collar worn for too long or made too tight on the pet's neck may cause skin damage ranging from redness to pressure ulcers. This condition is commonly known as bed sores.

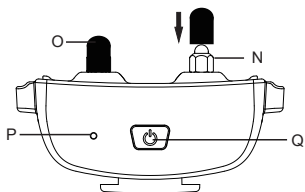
- Avoid leaving the collar on the dog for more than 12 hours per day.
- When possible reposition the collar on the pet's neck every 1 to 2 hours.
- Never connect a lead to the electronic collar; it will cause excessive pressure on the contacts.
- If a rash or sore is found, discontinue use of the collar until the skin has healed.
- If the condition persists beyond 48 hours, see your veterinarian.
- This product is not a toy, please keep away from children.
- This product is only for use with healthy dogs.

Overview



Remote

- A. LED Indicator
- B. Tone Button
- C. Level +
- D. Level -
- E. Vibration Button
- F. Vibration Level Display
- G. Shock Level Display
- H. On/Off Button
- I. • Channel Conversion Button
• Press and Hold it for setting
Vibration&Shock Level
- J. Shock Button
- K. Battery Capacity Display
- L. Channel Display
- M. High Shock Level Warning



Receiver Collar

- N. Contact Points
- O. Conductive Silicone Covers
- P. LED Indicator
- Q. On/Off Button

Setting Up the Product

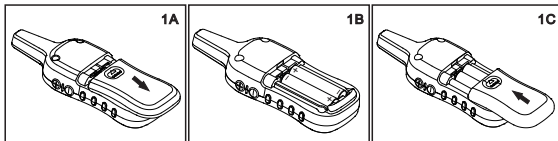
Before you can use the Dog Training Collar, you must set up the product using the steps below:

1. Prepare the Remote--install batteries and turn it on.
2. Prepare the Receiver Collar--install batteries, Contact Points, Conductive Silicone, then assemble them, turn the Receiver Collar on.
3. Function test --test function of buttons before putting it on dog.
4. How to Use the Test Lamp--use the Test Lamp to test Shock function or use as a screw driver.
5. Pair the Remote and the Receiver Collar--Pair them when the receiver loses connection with the remote , add another receiver, or after change batteries.

Prepare the Remote

Install battery on the Remote

1. Push out the battery cover to remove it(1A).
2. Install the battery according to the engraved mark, negative (-) first, positive(+) next(1B).
3. Install the battery cover on the Remote(1C).



Turn ON/OFF the Remote

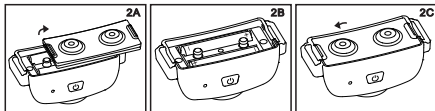
1. Press the ON/OFF Button on the Remote once to turn it ON.
2. LCD will be lighted, and show the information of current channel, battery power and levels. If not, please check the batteries position or change new batteries.
3. Press and hold the ON/OFF Button on the Remote to turn it OFF until the LCD display goes off, then release. It may take 2-3 seconds.

Note: When the remote is on, the LCD display will appear when any button is pressed.

Prepare the Receiver

Install battery on the Receiver

1. If the conductive screws are on , remove them first. Pop out the battery cover to remove it(2A).
2. Install the battery according to the engraved mark(2B).
3. Install the battery cover on the Receiver Collar(2C).

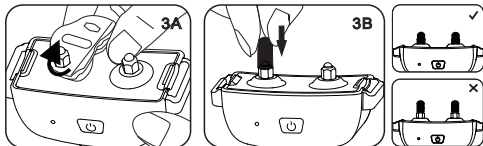


Install the Contact Points & Conductive Silicone

1. Select the correct Contact Points and Conductive Silicone length for your dog's coat type:
 - For dogs with thicker coats, Use 2pcs longer Contact Points and Conductive Silicones.
 - For dogs with shorter coats, Use 2pcs shorter Contact Points and Conductive Silicones.

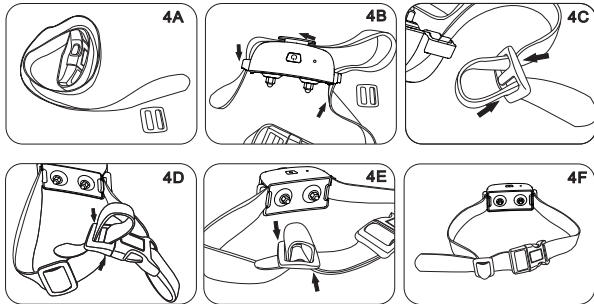
Note:

1. Don't install the Metal Contact Points when shock function is not used.
2. Insert the Contact Points into the ports of the collar, use the Test Lamp to rotate clockwise to tighten them(3A).
3. Install the Conductive Silicone onto the Contact Points to make it softer, which will be better for dog's skin(3B).



Assemble Collar Strap

1. Unhitch the nylon belt and take off the Slide Buckle(4A).
2. Thread the strap through the Receiver Collar(4B).
3. Thread the slide buckle through the strap(4C).
4. Thread the strap through the side release buckle(4D).
5. Thread the excess strap through the slide buckle to make sure the collar strap is surely tight(4E).



Turn on the Receiver Collar

- Press the On/Off Button the Green LED light comes on.
- In normal mode, the Green LED will flash every 4 seconds, indicating the Receiver Collar is on and ready to receive signal from the Remote.

Turn off the Receiver Collar

- Press and hold the On/Off Button until the Red LED light shuts off (This takes approximate 3 seconds).
- Release the On/Off Button.





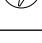





NOTE: To extend the life of the batteries, please turn the Receiver Collar off when it is not in use. Remove the battery if you don't use it for a long time.

Function Test


We recommend you experience the different shock/vibration levels firsthand on yourself. Please begin at the lowest level, then increase level gradually to your personal comfortable level. You can do as below.

1. Place one finger over both contact points of the training collar.
2. Hold your remote approximately 2 ft from the receiver collar. Press the Vibration Button continuously for 1 to 2 seconds. You should feel continuous vibration.
3. Press and hold $\textcircled{1/2}$ for about 5 seconds until the Shock icon flashes, press +/- to adjust levels.
4. Increase the level until the sensation begins to feel uncomfortable.

NOTE: Continuous stimulation will transmit for no more the 10 continuous seconds. To reactivate, release and repress the button.

	Vibration: send vibration command ranging 1-8 to the Receiver Collar.
	Tone: send a tone with non-adjustable level to the Receiver Collar.
	Shock: sends shock command ranging 1-16 to the Receiver Collar. Warning sign  will show when the level is over 8.
	Channel Conversion: Press shortly once to switch dog  and dog  channel. Vibration & Shock Level Adjustment: Press and hold  for about 5 seconds until the Vibration/Shock Level display flashes, press +/- to adjust levels.
	increase the Shock/Vibration Level.
	Decrease the Shock/Vibration Level.

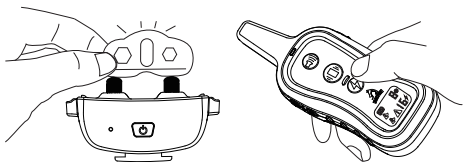
Note:

- Press and hold  until the Vibration/Shock Level display flashes to set Vibration/Shock Level.
- The Shock Level can be adjusted from 1 to 16 levels and the Vibration Level from 1 to 8 levels; please adjust it properly as per your dog's reaction.
- Don't press and hold the Vibration/Shock Button too long, to avoid physical or psychological hurt to the dog.

How to Use the Test Lamp

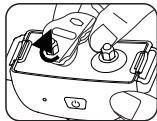
Shock Function Test

1. Turn on the Receiver Collar.
2. Hold the Test Lamp contacts against the Contact Points (or Conductive Silicone Covers).
3. Press the Shock Button and the Test Lamp will be lighted. It will be brighter as the Shock Level is increased.



As a Screw Driver

Use the Test Lamp to tighten or loosen the Contact Points when preparing the Receiver Collar.



Pair the Remote and the Receiver Collar

1. Use the Dog 1/2 Button on the Remote to select Dog 1 .
2. With the Remote turned on and the Receiver Collar turned off, press and hold the ON/OFF Button on the Receiver collar for 4-5 seconds.
3. The Red & Green LED will blink for about 10 seconds indicating that it is ready for pairing.
4. Press and hold the first Tone Button and the second Vibration Button at the same time for 2-3 seconds, when the LED on the Receiver Collar flashes green for 5 times indicating successful pairing.

Pairing a Second Collar with the Remote

1. Short press 1/2 Button on the Remote to select Dog 2 . Then follow the above pairing steps from 2-4.

Dog Training

Selecting The Contact Points and The Conductive Silicone Covers

For the best results, select the correct Contact Points based on your dog's coat.

- For dogs with thicker coats, Use 2pcs longer Contact Points and Conductive Silicones covers.

- For dogs with shorter coats, Use 2pcs shorter Contact Points and Conductive Silicones.

Fit the Training Fitting

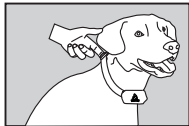
Please fit the collar properly so that the Contact Points press firmly against the dog's skin. When properly fitted, you can be able to put a finger in between the Receiver Collar and dog's neck.

Too loose: the Receiver Collar will move around the dog's neck, the friction of Contact Points may hurt the dog's skin.

Too tight: it may cause dog's to breathe hard.

Caution: 1. Do not shave the pet's neck as this may increase the risk of skin irritation.

2. The collar should not be worn for more than 12 hours per day. Or it may cause harm to dog's skin.



Find the Best Shock Level for Your Pet

The unit comes with Up and Down buttons to control the Shock Level, with Level 1 being the lowest level and Level 16 being the highest.

The most suitable shock level depends on your dog's temperament and threshold for Shock. Always start at the lowest level and work your way up. The appropriate level can be found when the dog responds to the Shock with a mild reaction, such as a flick of the ear, a lick of the lips, a tensing of the neck muscles etc. The Shock Level may vary depending on the training situation. When highly distracted, dogs will require a higher level of Shock.

Product Information

Product Specification

Battery Type	AAA(LR03) battery
Battery Life(typical use)	Remote: 60 days Receiver: 30 days
Remote Waterproof Rating	Non-Waterproof(Keep away from water)
Receiver Waterproof Rating	IEC 60529 IPX5, rain proof
Operating temperature range	From 0-40°C(from 32-104°F)
Wireless Power	10mW
Wireless Range	300m(984 feet)

The batteries need replaced under the situations below

1. The indicator light on the Receiver Collar is emitting a red color every 4 seconds or flashes rapidly.
2. The battery icon on the Remote LCD shows just 1 bar. (When battery is low, the shock function will be affected.)
3. The indicator light on the Remote or Receiver Collar will not come on.
4. The indicator light on the Remote or Receiver Collar comes on momentarily when any of the Mode Buttons is pressed.

Frequently Asked Questions

Is the Vibration/Shock safe for my pet?	While the Vibration/Shock is unpleasant, it is harmless to your pet. Electronic training devices require interaction and training from the owner to achieve desired results.
How old does my pet have to be before using the Remote Training Collar?	Your pet should be able to recognize basic obedience commands such as "Sit" or "Stay". Pets should be at least 6 months old before using the Training Collar.
Once my pet is trained and has been obeying my commands, will he have to continue to wear the Receiver Collar?	Probably not. But you need to reinforce the behaviors with adding treats and praise. After all, the object of training collar is not to use it finally..
Is the Receiver Collar water resistant?	Yes.
Will I get exactly 984 feet of range with the Remote Training Collar?	The range of the Remote Training will vary according to terrain, weather, vegetation, as well as transmission from other radio devices.

How long can I continuously deliver Vibration/Shock to my pet?

The maximum amount of time you can press the Vibration/Shock Button and deliver Vibration/Shock to your pet continuously is 10 seconds. After this, there will be a pause, the signal cannot be transmitted for about 5 seconds. After the 5 second time-out period, Button can be pressed and Vibration/Shock can be delivered again.

Troubleshooting Guide

My pet does not respond when I press a button.

- Make sure the Receiver Collar has been turned on.
- If your range has reduced from the first time you used the Remote Training Collar, the battery(s) may be low in either the Remote or Receiver Collar.
- Terrain, weather, vegetation, transmission from other radio devices and many other factors can impact the amount of range you have with the unit.
- Test the Receiver Collar. See "How to use the Test Lamp" for details.
- Increase the Shock Level. Refer to "Find the Best Shock Level for Your Pet" for more information.
- Make sure the Receiver Collar's Contact Points are placed snugly against your pet's skin. Refer to "Fit the Training Collar" for more informations .

The Receiver Collar will not turn on.

- Check that two LR03/AAA batteries have been installed properly. See "Install battery on the Receiver".

The Receiver Collar is not responding to the Remote.

- Make sure the Receiver Collar is on.
- If the Indicator Light does not come on when any button is pressed on the remote, ensure that the batteries are inserted properly.
- If the first two solutions did not resolve your problem, see "Pair the Remote and the Receiver Collar".

Warranty and repair information

1-Year Limited Lifetime Warranty

The original purchaser for this unit is provided with 1-YEAR WARRANTY. The warranty begins from the date of purchase. For the first year, coverage is for both Parts and Labor on warranty repair services.

Accessories such as straps and batteries are covered for the first year only. After the first year, the Limited Lifetime Warranty covers Parts only and does not cover Labor Fees and Accessories. All shipping fees incurred, the cost of Accessories after the first year, and Labor fees associated with out of warranty repair work, are the customer's responsibility. Labor fees will be variable depending on the extent of the work required. The Limited Lifetime Warranty expires after 5 years when a model is discontinued from production.

To Qualify for the Warranty

A proof of purchase is required for all products to initiate repair work under warranty. We strongly recommend keeping the original receipt. If a proof of purchase is not available at the time of service, we will estimate the age of unit by the serial number, which may differ from the actual purchase date, but the serial number is also the only method of determining an approximate date of purchase without a proof of purchase.

Not Covered Under Warranty

We DO NOT offer warranty for products that have been bought secondhand or as a resold product. We DO NOT replace defective units or provide refunds for products purchased from us after 30 days from the date of purchase. Issues of replacement and refunds on units purchased less than 30 days from an authorized dealer must be addressed to the dealer directly. If the products purchased from an authorized dealer are after 30 days from the date of purchase, please send the units to us for service and repair. We DO NOT cover the cost of repairs and replacements due to misuse by the owner or dog, improper maintenance, and/or lost units. Any water damage on the Water Resistant remote and the Water Resistant Receiver of our product

series will not be covered. All replacement costs for either the remote or receiver will be the owner's responsibility. The warranty is void if the unit has been altered or an unauthorized person has damaged the unit while attempting repair work. We reserve the right to retain and discard any parts or accessories that have been found damaged upon replacement and repair.

Procedure for Repair Work

If the unit is malfunctioning, please refer to the "Troubleshooting Guide" in the quick start before sending it back for Service. The postage of shipping to us under warranty is the customer's responsibility. We are not responsible for units damaged or lost in transition. We are not responsible for loss of training time or inconvenience while the unit is in for repair work. We do not provide loaner units or any form of compensation during the repair period. A copy of the sales receipt showing the purchase date may be required before warranty work is initiated. Please include a brief explanation outlining the problem and include your name, address, city/state/zip code, daytime phone number, evening phone number, and email address.

Compliance

FCC - USA

This device complies with part 15 of the FCC Rules. Operation is subjected to the following two conditions:

- (1) This device may not cause harmful interference.
- (2) this device must accept any interference received, including interference that may cause undesired operation.

CAUTION: Modification or changes to this equipment not expressly approved by Patpet Technology Co., Ltd may void the user's authority to operate the equipment.

Note: This equipment has been tested and found to comply with the limits for a Class B digital device, pursuant to part 15 of the FCC Rules. These limits are designed to provide reasonable protection against harmful interference in a residential installation. This equipment generates uses and can radiate radio frequency energy and, if not installed and used in accordance with the instructions, may cause


harmful interference to radio communications. However, there is no guarantee that interference will not occur in a particular installation. If this equipment does cause harmful interference to radio or television reception, which can be determined by turning the equipment off and on, the user is encouraged to try to correct the interference by one or more of the following measures:


- Reorient or relocate the receiving antenna.
- Increase the separation between the equipment and receiver.
- Connect the equipment into an outlet on a circuit different from that to which the receiver is connected.
- Consult the dealer or an experienced radio/TV technician for help.



Shenzhen Patpet Technology Co.,Ltd

 <https://patpet.com/>

 Become a dealer: inquiry@patpet.com

 After-service: support@patpet.com

 [@PatpetDogCollar](#)

 Youtube Video Guide



MADE IN CHINA